

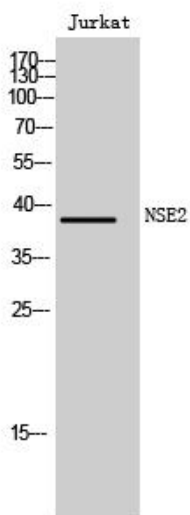


NSE2 Polyclonal Antibody

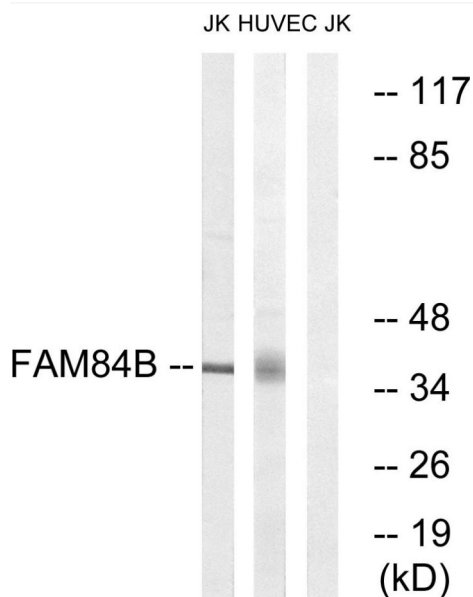
Catalog No	YP-Ab-00465
Isotype	IgG
Reactivity	Human;Rat;Mouse;
Applications	WB;IHC;IF;ELISA
Gene Name	FAM84B
Protein Name	Protein FAM84B
Immunogen	The antiserum was produced against synthesized peptide derived from human FAM84B. AA range:11-60
Specificity	NSE2 Polyclonal Antibody detects endogenous levels of NSE2 protein.
Formulation	Liquid in PBS containing 50% glycerol, 0.5% BSA and 0.02% sodium azide.
Source	Polyclonal, Rabbit,IgG
Purification	The antibody was affinity-purified from rabbit antiserum by affinity-chromatography using epitope-specific immunogen.
Dilution	WB: 1/500 - 1/2000. IHC: 1/100 - 1/300. ELISA: 1/10000.. IF 1:50-200
Concentration	1 mg/ml
Purity	≥90%
Storage Stability	-20°C/1 year
Synonyms	FAM84B; BCMP101; NSE2; Protein FAM84B; Breast cancer membrane protein 101; Protein NSE2
Observed Band	38kD
Cell Pathway	cytoplasm,plasma membrane,
Tissue Specificity	Expressed in esophageal squamous cell carcinomas.
Function	similarity:Belongs to the FAM84 family.,tissue specificity:Expressed in esophageal squamous cell carcinomas.,
Background	similarity:Belongs to the FAM84 family.,tissue specificity:Expressed in esophageal squamous cell carcinomas.,
matters needing attention	Avoid repeated freezing and thawing!
Usage suggestions	This product can be used in immunological reaction related experiments. For more information, please consult technical personnel.



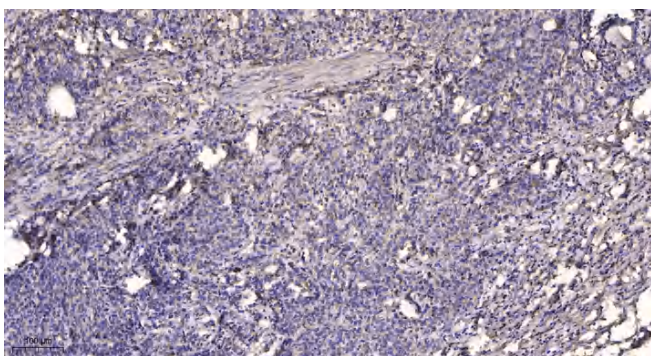
Products Images



Western Blot analysis of Jurkat cells using NSE2 Polyclonal Antibody



Western blot analysis of lysates from Jurkat and HUVEC cells, using FAM84B Antibody. The lane on the right is blocked with the synthesized peptide.



Immunohistochemical analysis of paraffin-embedded human Gastric adenocarcinoma. 1, Antibody was diluted at 1:200(4° overnight). 2, Tris-EDTA,pH9.0 was used for antigen retrieval. 3,Secondary antibody was diluted at 1:200(room temperature, 45min).